



Ergonomics

- Lightweight Portable design
- 15 inch high resolution LCD monitor with ergonomic keyboard
- High capacity images and clips storage
- Rechargeable Lithium battery
- Customized carrying bag
- Widely used in situations of pet hospital, farm medical station, teaching research



Shenzhen Lanmage Medical Technology Co., Ltd.

Address: Lanmage Science & Technology Park, Tangtou Road, Shiyan Sub-district, Baoan District, Shenzhen.

Website: www.lanmage.com E-mail: oversea@lanmage.com

Tel : (86-755) 6686 9896

©copyright2020 Shenzhen Lanmage Medical Technology Co.,Ltd. All rights reserved.

CFDA CE EN ISO 13485:2016



Portable Color Doppler Ultrasound Diagnostic System C5exp Vet



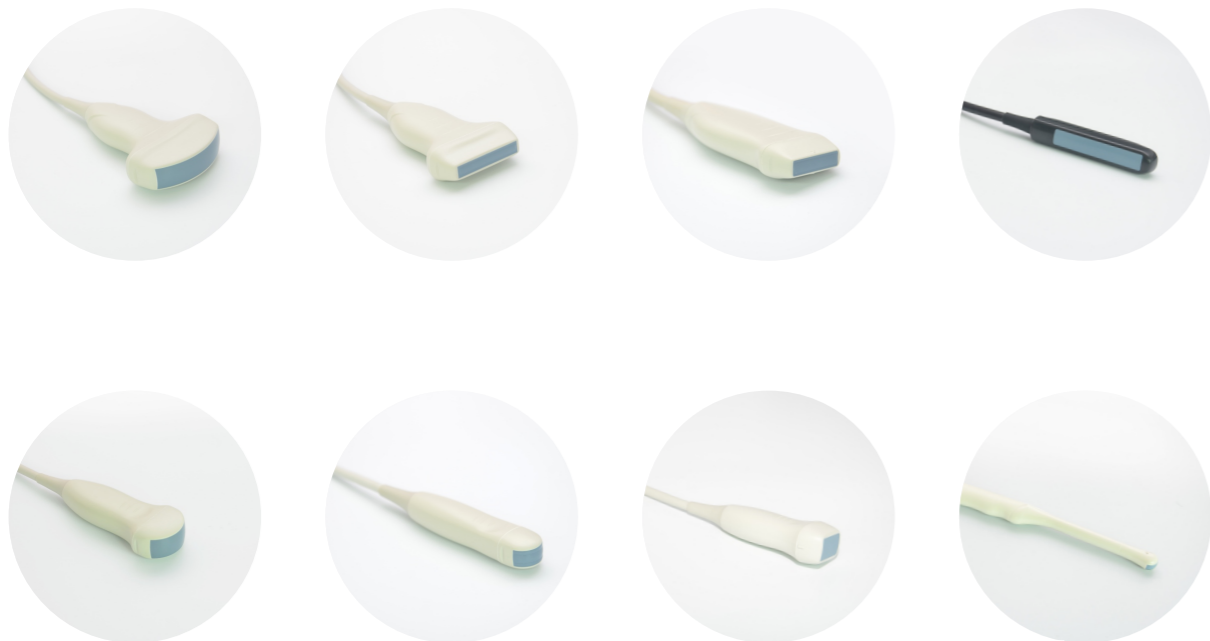
Lanmage
Clarity for life



Professional Veterinary Clinical Solutions

- Intelligent animal management system
- Variety animal body parts exam: abdomen, thoracic cavity, tendon, small organ, eyeball, reproduction, cardiac, etc
- Comprehensive animal clinical application software package: Cat, Dog, Sheep, Cow, Horse, Llama, Goat, Pig, Dolphin
- Multiple configuration probes:

| | |
|------------------------------------|------------------------------|
| R60 Convex array probe | L40 Linear array probe |
| L25 Linear array probe | R10 Endocavity array probe |
| R20 Micro-convex array probe | R10 Micro-convex array probe |
| P20 Phased array probe | P10 Phased array probe |
| L40 Electronic rectal linear probe | |



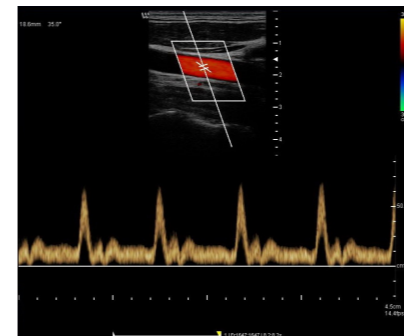
Efficient Workflow

- User-defined image presets and parameters
- Quick save image or report
- Multiple printing solutions
- One-click full screen
- Multi language: Chinese, English, Spanish, French

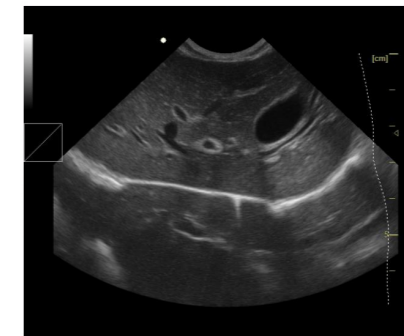
Powerful Functions

- | | |
|---|--|
| <ul style="list-style-type: none"> B, B/B, 4B, B/M, M mode Intelligent convex expansion technology Speckle reduction imaging MCI (Multiple Compound imaging) Triplex/Duplex live imaging Steering/Trapezoidal imaging Anatomic M-mode(Optional) TDI(Tissue Doppler Imaging)(Optional) Convex Probe Extension Imaging | <ul style="list-style-type: none"> PW, CDFI, PDI, DPI mode Variance Imaging Lighting Imaging(R Flow) Real-time auto Doppler measurement Continuous wave Doppler(Optional) Panoramic Imaging(Optional) CEUS(Contrast-Enhanced Ultrasonography)(Optional) Spectrum Real-time Envelope measurement technology |
|---|--|

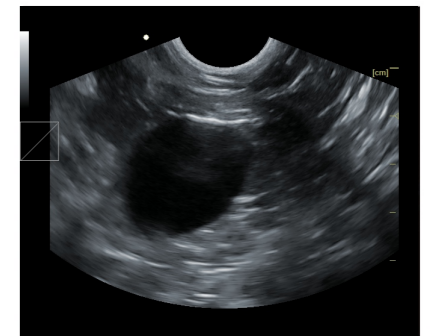
Clinical Image



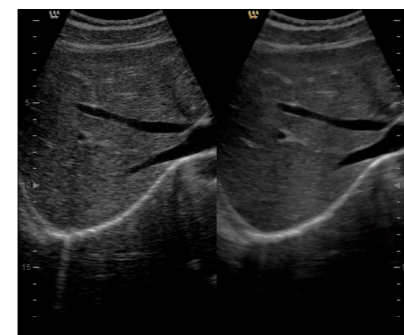
Arterial Blood Flow



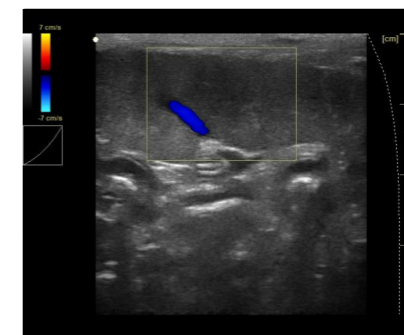
Canine Liver



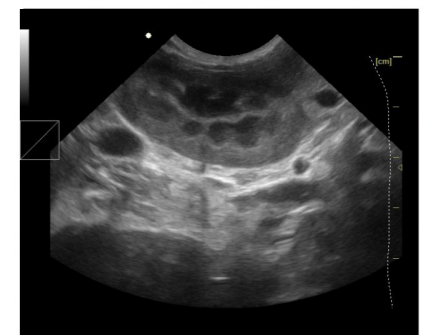
Canine Bladder



LanSRI Speckle Removal Imaging



Canine Spleen



Canine Kidney